

Specifications

Model	Gel Documentation & Analysis		Chemiluminescence		Chemifluorescence & Chemiluminescence		
	Xlite 30 R	Xlite 200 R	ChemLite 200 F	ChemLite 400 F	ChemX 200 FA / F	ChemX 400 FA	
Cat#	AG-LA030	AG-LA200R	AG-LA200CL	AG-LA400CL	AG-LA200F / A	AG-LA400FA	
I. Image Capturing Unit							
Camera Set	CCD Sensor	Kodak KAI-0340	Kodak KAI-2020	Kodak KAI-2020	Kodak KAI-4021	Kodak KAI-2020	Kodak KAI-4021
	Pixel Size (µm, VxH)	7.4 x 7.4	7.4 x 7.4	7.4 x 7.4	7.4 x 7.4	7.4 x 7.4	7.4 x 7.4
	Dynamic Range	0 to 3.6 OD	0 to 3.6 OD	0 to 3.6 OD	0 to 4.2 OD	0 to 3.6 OD	0 to 4.2 OD
	Exposure Time	Up to 120 sec	Up to 120 sec	Up to 120 min	Up to 120 min	Up to 120 min	Up to 120 min
	Cooling Method	None	None	Thermoelectric	Thermoelectric	Thermoelectric	Thermoelectric
	Cooling Temperature	None	None	-35°C (Relative)	-35°C (Relative)	-35°C (Relative)	-35°C (Relative)
	Capture Resolution	VGA; 640x480	2.0M; 1600x1200	2.0M; 1600x1200	4.0M; 2048x2048	2.0M; 1600x1200	4.0M; 2048x2048
	Bit Depth	12 bit	12 bit	12 bit	14 bit	12 bit	14 bit
Lens Set	PC Interface	IEEE 1394(FireWire)	IEEE 1394(FireWire)	IEEE 1394(FireWire)	IEEE 1394(FireWire)	IEEE 1394(FireWire)	IEEE 1394(FireWire)
	Lens Type	6 X Zoom Lens	6 X Zoom Lens	Fixed Focus Lens	Fixed Focus Lens	Fixed Focus Lens	Fixed Focus Lens
	Motor-driven Lens Operation	X	X	X	X	V / X	V
	Auto Focus	X	X	X	X	X	V
	Lens Mount	C-mount	C-mount	C-mount	C-mount	C-mount	C-mount
II. Intelligent Darkroom							
Filter Set	Filter Turret	Motor-Driven, 6 position	Motor-Driven, 6 position	Motor-Driven, 6 position	Motor-Driven, 6 position	Motor-Driven, 6 position	Motor-Driven, 6 position
	Emission Filter (One standard set; Five for optional order)	595 nm (EtBr Stain)	595nm (EtBr Stain)	595nm (EtBr Stain)	595nm (EtBr Stain)	595nm (EtBr Stain)	595nm (EtBr Stain)
Control Set	Display Panel	Build-in 7" TFT LCD	Build-in 7" TFT LCD	Build-in 7" TFT LCD & PC	Build-in 7" TFT LCD & PC	Build-in 7" TFT LCD & PC	Build-in 7" TFT LCD & PC
	Standalone Control	Front Control Pad	Front Control Pad	Front Control Pad	Front Control Pad	Front Control Pad	Front Control Pad
	PC Control Interface	Optional	Optional	V (Windows XP)	V (Windows XP)	V (Windows XP)	V (Windows XP)
	Image Storage	USB Storage	USB Storage	USB Storage & PC	USB Storage & PC	USB Storage & PC	USB Storage & PC
Lighting Set	Motor Focus Platform (MFP)	X	X	Motor-driven, 4 locations	Motor-driven, 4 locations	Motor-driven, 4 locations	Motor-driven, 4 locations
	UV Transilluminator (26cm X 21cm)	V	V	V	V	V	V
	White Back Light	V	V	Optional	Optional	Optional	Optional
	Epi White Light	V	V	V	V	V	V
	Epi Blue Light	X	X	X	X	Optional	Optional
	Epi Green Light	X	X	X	X	Optional	Optional
Epi Red Light	X	X	X	X	Optional	Optional	
III. Software							
System Control & Image Capture	Avegene Xview	Optional	Optional	V	V	V	V
Analysis	1D or 2D Analysis	Optional	Optional	Optional	Optional	Optional	Optional
IV. General Info							
	Power	100V-240V	100V-240V	100V-240V	100V-240V	100V-240V	100V-240V
	Dimension (WxHxD)	620x1040x415mm	620x1040x415mm	620x1040x415mm	620x1040x415mm	620x1040x415mm	620x1040x415mm
	Weight	50Kg	50Kg	60Kg	60Kg	65Kg	65Kg
	Certification	UL,CE	UL,CE	UL,CE	UL,CE	UL,CE	UL,CE

* Avegene Life Science reserves the right to change the specifications without any prior notification.

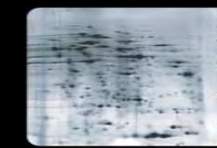
**Effective date: February 1, 2007

LIAS Xlite

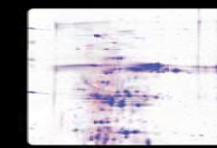
Compact, Standalone Bioimaging System



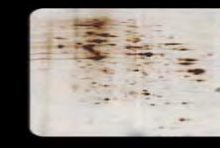
Agarose Gel



Prostain



CBB Staining



Silver Staining



Xlite Series

is a standalone gel documentation system featuring a combination of simplicity, versatility and reliability. It comes with a high quality scientific grade CCD camera, a built-in 7" TFT LCD panel and a smart cabinet, making the easiest handling of high quality bio-image acquisition and analysis.

Xlite is available in two models. Xlite 200R is having high resolution 2 mega pixel camera which replaces VGA resolution camera supplied with Xlite 30R.

Camera

- Choice Of VGA or 2M Pixel Resolution
- Increased Dynamic Range Of 3.6 OD
- High Sensitivity, 12 Bit Scientific Grade CCD Camera
- Fully-digitized Firewire

Lens & Filters

- Motor-Driven Filter Wheel
- 6-Position, Multiple Emission Filter Selection
- f/1.2, 6 x Zoom Lens

Smart Darkroom

- Light-Tight Cabinet
- Real-time Image Display
- Easy Setting of Exposure Time, Filter and Illumination
- Auto UV Cut-off Protection
- Auto Idle Mode

Illumination

- UV Transilluminator
- White Back Light
- Epi White Light

Software (optional)

- Image Capture XView
- 1D Image Analysis GelVista
Totalab TL100 / TL120 / TL120 DM
- 2D Image Analysis Phoretix 2D
Progenesis PG 200 / 220 / 240

Versatility

- Multiple Application Supports
EtBr, Fluorescein, GFP, SYBR Green I, SYPRO Orange, SYPRO Red, SYPRO Ruby, Texas Red, ProStain (VisPro), Silver Stain, CBB Stain, X-Ray Film NBT / BCIP
- Fluorescence Imaging
- Gel, Film, and Membrane Imaging
- Culture
- Microplate Based Assays
- MacroArray

Advanced Optics Design

- Mira
Reduced noise high sensitivity CCD Camera.
- D-max Technology
A propriatery technology can enhance the dynamic range when image capture.

Easy-to-Use Standalone

- Built-In 7" TFT LCD Screen
- One-Finger-Touch Control Pad
- USB Storage Device
- Instant Printing Support
- Easy Access Sliding Door
- Object Position Assistant Grids