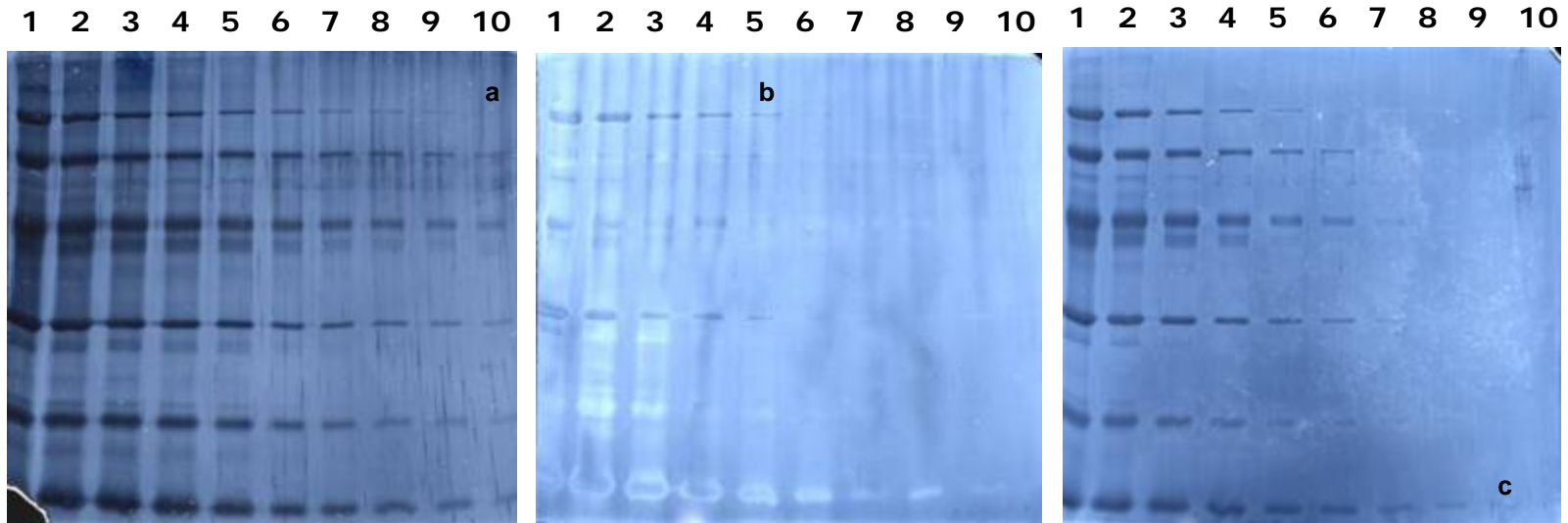


## Visual Protein

## Competitor B

## Competitor P



	Visual Protein	Competitor B	Competitor P
staining	5 min	10 mins	10 min
washing	5 sec	3 mins	0
developing	30 sec	1 min	2 min
total time need	5 min 35 sec	14 mins	12 mins
Sensitivity	Highest	Lowest	Moderate

### Testing condition:

8mg of Amersham LMW marker (total six proteins mixed) with two folds serial dilution (lane1-10) were subjected to separation by 15% SDS-PAGE. All reversed staining were performed according respective manufacturer's instruction.

### Lowest amount protein (negative stained) detected for

Visual Protein: 1.8ng (phosphorylase b, marked as a)

Competitor B: 58.1ng (phosphorylase b, marked as b)

Competitor P: 6.5 ng (alpha-lactoalbumin, marked as c)