



Advance™

with *Advance.im*, the unparalleled system that gives you complete control of your tests and results.

Simple Operation

- Prepare Samples
- Load Reagents and Samples and Press Start
- Download Data and Create Reports

Manage Your Results

The Celsis *Advance* luminometer has a built-in keyboard, display and operating system for stand alone operation. Its capabilities can be expanded with *Advance.im* software (included with purchase) and a computer with at least an Intel®Pentium® processor.

Advance.im provides efficient information management, paperless record keeping, trend analysis, report generation and, in addition, allows for data to be exported into various file formats for use in leading software applications. *Advance.im* can interface to all laboratory information management systems (LIMS), enabling results to be archived and combined for trend analysis.

Optimize Your Testing

- Reliability of results ensured through highly sensitive reagents
- Increased laboratory productivity achieved through automated system design
- Reliable operation ensured through ISO 9002 Certification, precision engineering and certified instrument calibration
- Enhanced user confidence by on-site Installation Qualification and support
- Increased "walk away time" provided by the *Advance.im* software:
 - Simultaneous testing of multiple sample batches
 - Quick sample results
 - Non-dedicated computer can be used for other operations



Management consulting firm Arthur D. Little (ADL) studied the results of implementing a Celsis rapid methods program at a large manufacturer of consumer products. ADL found that the value of adopting the Celsis system for a single product application in only one plant saved nearly \$1 million in inventory and warehousing costs.



UK

Cambridge Science Park
Milton Road
Cambridge CB4 0FX
Phone +44 (0) 1223 426 008
Fax +44 (0) 1223 426 003

The Netherlands

Ampèrestraat 13
6372 BB Landgraaf
Phone +31 (0) 45 569 66 66
Fax +31 (0) 45 569 66 99

Germany

Postfach 1152
52111 Herzogenrath
Phone +49 (0) 241 912 500
Fax +49 (0) 241 912 510

France

1, rue Jean Carrasso
95870 Bezons
Phone +33 (0) 1 34 23 39 81
Fax +33 (0) 1 34 23 39 03

USA

1801 Maple Avenue
Evanston IL 60201
Phone +1 (0) 800 222 8260
Fax +1 (0) 847 467 6602

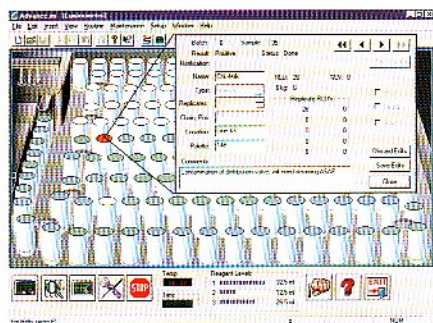
Mission

To become a world leader in the provision of microbial testing, risk management and quality assurance services.

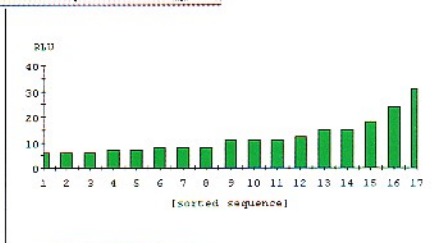
We will focus on quality products and services, customer value and shareholder return.

Advance™

with Advance.im, the unparalleled system that gives you complete control of your tests and results.



- Simplified Testing
- Automated Data Management



Advance.im Features

- Graphic user interface
- Multi-protocol/product tracking/trend analysis
- Paperless record keeping
- Administrative functions and security controls
- Report generation
- Instrument QA tracking
- Instrument maintenance
- Windows 95/98 and Windows NT 4.0 operating system
- Advance.im software runs on a computer with at least an Intel®Pentium® processor.

Luminometer Features

- 3 variable volume reagent injectors
- Sample capacity of 150 cuvettes
- Battery back-up and data storage for previous 30 runs
- Read mode of 0.1 to 99 seconds
- Variable delay times between injections, in increments of 0.1 second
- Innovative photomultiplier design prevents outside interference
- RS232 interfacing allows for data transfer to external PC or software control for increased or custom processing
- Epson dot matrix printer included

Physical Characteristics

- Dimensions - 48 cm wide, 38 cm tall, 57 cm deep
- Weight - 30 kg
- Power supply - 220v/50 Hz, 110v/60 Hz
- Power consumption - 500 mA at 220v