



Advance coupe™

Simple Operation

- Prepare Samples
- Load Reagents and Samples
- Press Start

Optimize Your Testing

- Reliability of results ensured through highly sensitive reagents
- Increased laboratory productivity achieved through automated system design
- Reliable operation ensured through ISO 9002 Certification, precision engineering and certified instrument calibration
- Enhanced user confidence by on-site Installation Qualification and support
- Increased "walk away time" provided by the *Advance.im* option
 - Simultaneous testing of multiple sample batches
 - Quick sample results
 - Non-dedicated computer can be used for other operations

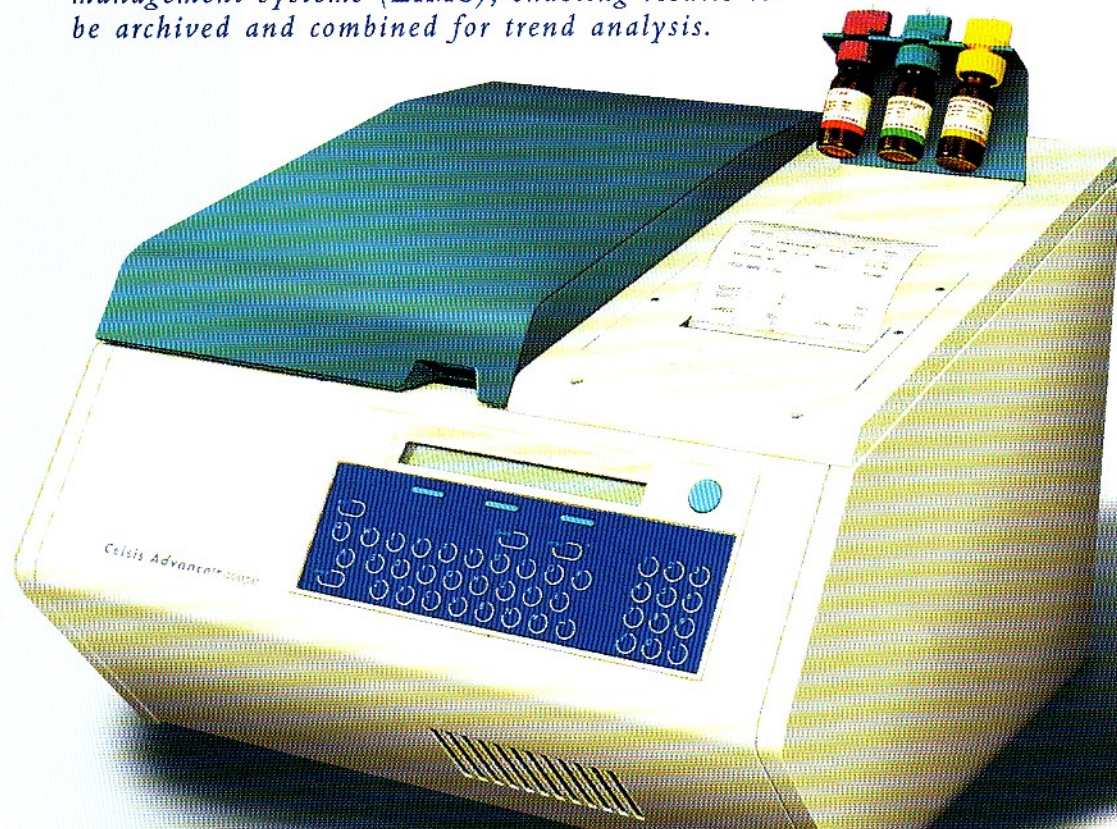
Optional Feature . . .

Manage Your Results With *Advance.im* software

Advance.im provides efficient information management, paperless record keeping, trend analysis, report generation and, in addition, allows for data to be exported into various file formats for use in leading software applications. *Advance.im* can interface to all laboratory information management systems (LIMS), enabling results to be archived and combined for trend analysis.



Management consulting firm Arthur D. Little (ADL) studied the results of implementing a Celsis rapid methods program at a large manufacturer of consumer products. ADL found that the value of adopting the Celsis system for a single product application in only one plant saved nearly \$1 million in inventory and warehousing costs.



Advance coupe™

Luminometer Features

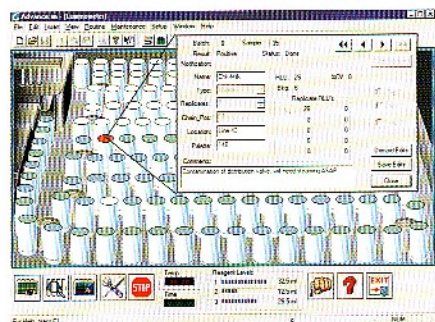
- On-board thermal printer
- 3 variable volume reagent injectors
- Sample capacity of 30 cuvettes
- Battery back-up and data storage for previous 30 runs
- Read mode of 0.1 to 99 seconds
- Variable delay times between injections in increments of 0.1 second
- Innovative photomultiplier design prevents interference
- RS232 interfacing allows data transfer to external PC for increased or custom processing

Physical Characteristics

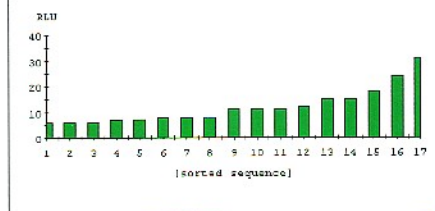
- Dimensions – 48 cm wide, 38 cm tall, 57 cm deep
- Weight – 30 kg
- Power supply – 220v/50 Hz, 110v/60Hz
- Power consumption – 500 mA at 220v

Optional Feature . . .

Advance.im, the unparalleled system that gives you complete control of your tests and results



- Simplified Testing
- Automated Data Management



Advance.im Features

- Graphic user interface
- Multi-protocol/product tracking/trend analysis
- Paperless record keeping
- Administrative functions and security controls
- Report generation
- Instrument QA tracking
- Instrument maintenance
- Windows 95/98 and Windows NT 4.0 operating system
- Advance.im software runs on a computer with at least an Intel®Pentium® processor.

Website: www.celsis.com

UK

Cambridge Science Park
Milton Road
Cambridge CB4 0FX
Phone +44 (0) 1223 426 008
Fax +44 (0) 1223 426 003

The Netherlands

Ampèrestraat 13
6372 BB Landgraaf
Phone +31 (0) 45 569 66 66
Fax +31 (0) 45 569 66 99

Germany

Postfach 1152
52111 Herzogenrath
Phone +49 (0) 241 912 500
Fax +49 (0) 241 912 510

France

1, rue Jean Carrasso
95870 Bezons
Phone +33 (0) 1 34 23 39 81
Fax +33 (0) 1 34 23 39 03

USA

1801 Maple Avenue
Evanston IL 60201
Phone +1 (0) 800 222 8260
Fax +1 (0) 847 467 6602

Mission

To become a world leader in the provision of microbial testing, risk management and quality assurance services.

We will focus on quality products and services, customer value and shareholder return.