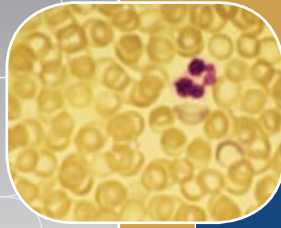


VIVA®



Viva Dual Access Animal Containment Workstation, Model VDA-4A.

Dual Access Animal Containment Workstation
The Portable Safety Solution for Animal Research Laboratories



ESCO

WORLD CLASS. WORLDWIDE.



Main Features

- Sentinel™ Microprocessor controller supervises all functions.
- Long-life ULPA filters protect supply and exhaust airflow.
- Activated carbon filter removes odors.
- KI Discus tested for performance integrity.

Work surface component removal simplifies cleaning.

Recessed airflow grille prevents blockage to maintain performance.

ISOCIDE™ antimicrobial surface on all painted surfaces.

Containment and Protection

The Esco Viva Dual Access Animal Containment Workstation provides Class II type performance to help protect investigators and animal handlers from exposure to animals and animal products which can cause occupational hazards such as asthma and allergies.

The Dual Access workstation protects the operator from airborne contamination during cage changing or other procedures. At the same time, the Workstation protects the animals or work product from cross contamination and protects the environment from allergens and particulate emissions.

Comfortable Ergonomic Design, Portable

All Viva workstations are engineered for comfort, utility value and safety.

- Sloped viewing windows reduce glare and permit easier reach into the work area from either side.
- Instant-start 5000k fluorescent lamps operate on electronic ballasts for energy efficiency.





The stainless steel work surface is easy to clean. Tray components lift, tilt and fix position to provide access and simplify surface decontamination.

- Lamps deliver 102 foot candles to the work surface for overall illumination.
- The work surface height is electrically adjustable from 34 to 46 inches for ergonomic comfort and operator convenience.
- The workstation is easily moved on non-marking 5 inch wheels with locking brakes.
- When fully lowered to a height of 75.5 inch the cabinet can be wheeled from lab to lab. A stainless steel push/pull bar is mounted on one end.

Integrated Filtration System

A combination of twin ULPA filters, an activated carbon filter and an intake air pre-filter give the Workstation a fully integrated envelope for animal, operator and environmental protection.

- Mini-pleat ULPA filters are tested to >99.999% efficiency for 0.3 micron particulates, better than HEPA filters.
- An improved mini-pleat separation technique maximizes filter surface area, improves efficiency and extends filter life over conventional separation.
- The disposable pre-filter traps larger particulates before they enter the blower chamber, and protects the supply ULPA filter to extend filter life.

- The supply ULPA filter supplies clean air to the work surface in a gentle vertical laminar flow.
- An activated carbon filter removes odors from the ULPA filtered exhaust air stream before returning air to the laboratory.
- The exhaust ULPA filter removes all allergens and particulates acquired from the work surface before the air is exhausted to the room.

Balanced Air Flow

Contaminated room air does not enter the work area.

- Intake and exhaust ratios are factory balanced before shipment to assure proper performance of the resulting air curtain.
- The inflow of room air is captured in the slots peripheral to the work surface before it can contaminate the work area.

Blower Efficiency

The Dual Access Workstation blower system is designed for maximum energy efficiency and minimal maintenance.

- Two independent blowers are used, one for the supply filter and one for the exhaust filter.
- Centrifugal, direct-drive, external rotor motors are selected to reduce operating costs.

- Unique Esco motor/blower orientations minimize noise and vibration.
- Built-in solid-state variable speed controllers are infinitely adjustable from Off to Maximum.
- Built-in RFI and electrical noise filters eliminate interference with adjacent instrumentation.

Microprocessor Control, Alarm, Monitoring System

The Esco Sentinel microprocessor-based control system supervises operation of all cabinet functions. Controls are configurable to meet user requirements. Features of the main control panel include:

- Automatic start-up sequence prepares Workstation for normal operation; advises when safe conditions established.
- Continuous monitoring and display of cabinet airflow on bright, easy-to-read LCD display.
- Password-protected administration can be set to restrict access to main menu.
- Audible and visual alarms warn of unsafe conditions such as low airflow.
- Integrated true velocity airflow sensors are temperature compensated for improved accuracy.
- Two independent MiniHelic™ pressure gauges mounted at eye level monitor

Touchpad data entry buttons permit control settings and access to diagnostics, default settings and hierarchical menus.

Color coded indicator lamps display normal, caution or warning status.

A graphical interface indicates cabinet performance.

Digital read-out with alpha-numeric display indicates all input, status and alarm functions.

Start-up sequence completion is confirmed by Air Safe and local time display.



Sentinel Microprocessor Control System

General Specifications, Model VDA-4A2 Dual Access Animal Handling Workstation	
External Dimensions (L x W x H)	52.9" x 30.0" x 75.5" minimum height 52.9" x 30.0" x 87.5" maximum height
Internal Work Area (L x W x H)	49.3" x 29.1" x 23"
Downflow Velocity	Initial setpoint: 59 ft./min
Pre-Filter	Disposable, non-washable polyester fiber, 85% arrestance, EU3 rated
ULPA Filter Typical Efficiency	>99.999% at 0.3µm
Sound Emission	Typically <59 dBA at initial blower speed setting, subject to acoustic properties of test environment
Fluorescent Lamps	>102 foot candles, measured at work surface level, zero background
Construction, Main Body	16 gauge electro-galvanized steel with Isocide white oven-baked epoxy power coating.
	110-130V, AC, 60Hz, 1Ph 9 amps
Shipping Dimensions, Maximum (L x W x H)	56.7" x 32.7" x 82.6"
Shipping Volume, Maximum	88.3 cbf

Standards Compliance	Air Quality	Filtration	Electrical Safety
	ISO 14644.1, Class 4, Worldwide JIS B9920, Class 4, Japan JIS B55295, Class 4, Japan US Fed Std 209E, Class 10 USA	EN-1822, Europe IEST-RP-CC001.3, USA IEST-RP-CC007, USA IEST-RP-CC034.1, USA	UL-C-61010A-1, Canada CSA22.2, No.1010-192, Canada EN-61010-1, USA IEC61010-1, USA

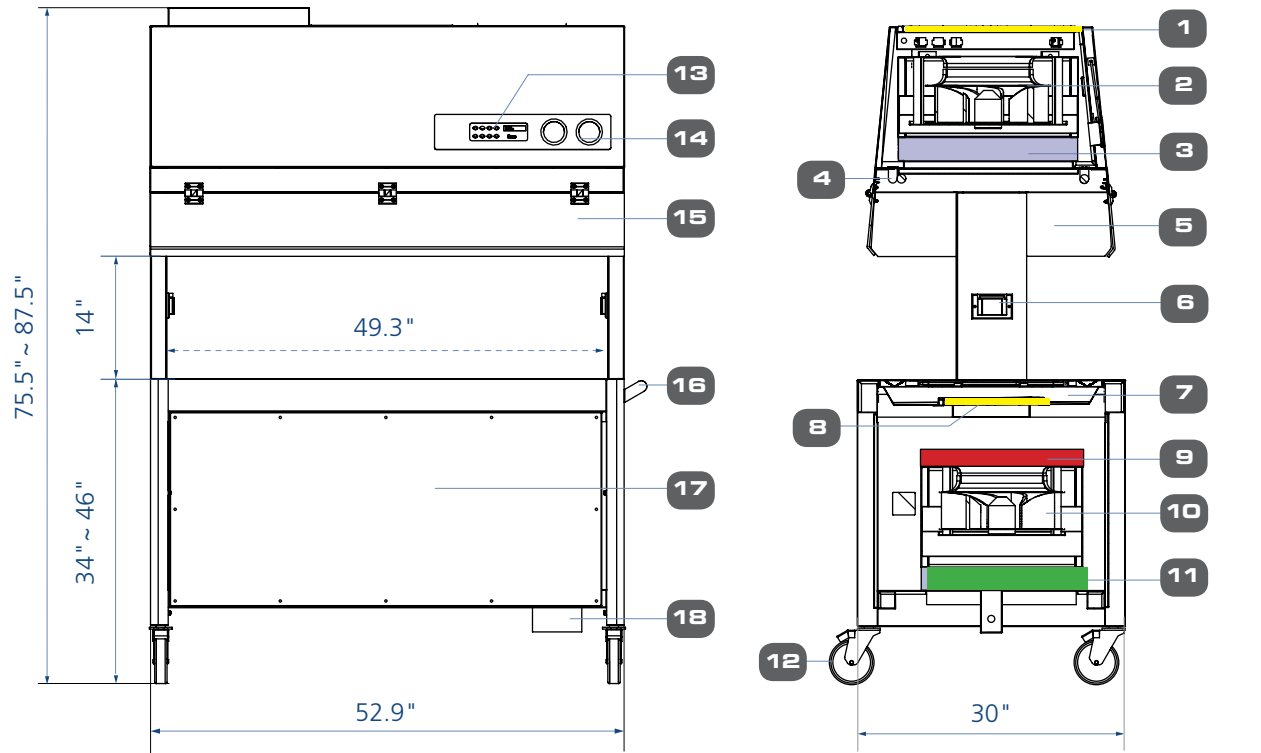
pressure across the intake and exhaust blowers to indicate airflow normal airflow differentials within the system.

Electrical Safety and Certification

All components used in Esco products meet or exceed applicable safety requirements.

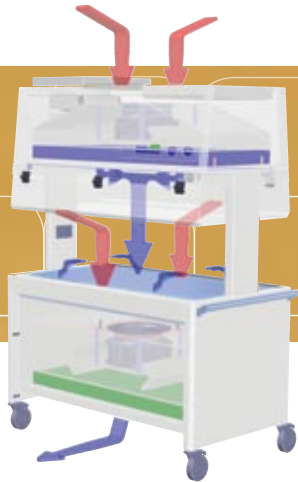
- Retractable power cord stores easily for moving from one location to another.
- Each cabinet is individually factory tested for electrical safety.
- Documentation specific to each cabinet serial number is maintained on file.
- The Viva workstations meet general safety requirements set forth by independent testing laboratories (see Specifications).
- UL Listing pending for USA and Canada

Model VDA Dual Access Workstation Technical Specifications



- | | | | | |
|---------------------------|--|--------------------------------------|-------------------------------------|--|
| 1. Pre-filter | 6. Electrical Outlet Retrofit Kit™ Provisions (2 no's) | 9. Activated Carbon Exhausted Filter | 13. Sentinel Microprocessor Control | 16. Steel Side Handle |
| 2. Downflow Blower | 7. Stainless Steel Single-Piece Work Surface | 10. Exhaust Blower | 14. Minihelic* Pressure Gauge | 17. Electrical / Electronics Service Panel |
| 3. Downflow ULPA Filter | 8. Second Pre-Filter | 11. Exhaust ULPA Filter | 15. Hinged Polycarbonate Window | 18. Exhaust Airflow Sensor |
| 4. Fluorescent Light | | 12. Castor Wheels | | |
| 5. Transparent Side Panel | | | | |

5



The Model VDA Dual Access Workstation employs a total exhaust, non-recirculating airflow configuration similar to a Class II, Type B2 biological safety cabinet.

1. The blower system pulls ambient intake air through the pre-filter, trapping larger dust particles and extending the useful life of the ULPA filter.
2. Air flows through the main ULPA supply filter and bathes the work zone in clean air with a non-turbulent airflow.

3. Recessed air grilles on the peripheral work surface collect ambient air. Combined with vertical laminar downflow, the VDA creates an air curtain to protect the operator from contaminants released from the work surface.
4. An activated carbon filter removes odors.
5. The exhaust ULPA filter removes contaminants before air is returned to ambient.

Cabinet Design and Construction

Robust construction and enhanced safety features qualify the Workstation for the most demanding laboratory applications.

- A recessed central area and stainless steel drain pan contain spills and prevent liquids from entering

the lower filtration and blower systems.

- Work surface air intake grilles are configured to prevent obstructions by objects placed outside the work zone.
- The cabinet structure is constructed of industrial-grade electro galvanized steel.
- External surfaces are coated with Esco Isocide antimicrobial coating to protect against surface contamination and inhibit bacterial growth. Isocide eliminates 99.9% of surface bacteria within 24 hours of exposure.

Warranty

The Viva Dual Access Workstation is warranted for 3 years excluding consumable parts and accessories. Contact your local sales representative for specific warranty details.

Accessories and Options

Plastic Shield (pictured)

Electrical outlets

Ordering Codes

- EO-GFCI (for North America)
- EO-HX

Foldable Side Tray





6



Esco Biotechnology Products

Laminar Flow Cabinets, Vertical, Horizontal, PCR
Biological Safety Cabinets, Class II, III
Cytotoxic Safety Cabinets
In Vitro Fertilization Enclosures
Powder Weighing Balance Enclosures
Animal Containment Workstations
Custom Clean Air and Containment Workstations

Esco products are sold and serviced by more than 200 distributors in over 70 countries. For the name of your local sales representative visit escoglobal.com/sales.

NSF Standard 49 Biological Safety Cabinets • Animal Containment Workstations • Fume Hoods • Clean Benches



ESCO®

WORLD CLASS. WORLDWIDE.

Esco Biotech, Inc. • 12701 Executive Drive, Suite 600 • Stafford (Houston) TX 77477 USA
Toll-Free 877-231-5227 • Local 281-565-0355 • Fax 281-565-0570
www.escobiotech.com • mail@escobiotech.com

PharmaMedSci Group • 6045 St. Francois, St. Laurent, Quebec H4S 1B6 CANADA
Toll-Free 877-9-BUY-ESCO • 877-928-9372 • Local 514-336-0392 • Fax 514-336-9607
www.pharmamedsci.com • info@pharmamedsci.com

Esco Global Offices | Singapore | Beijing & Shanghai, China | Dubai, U.A.E. | Houston & Philadelphia, USA | Johannesburg, South Africa
Kuala Lumpur, Malaysia | Leiden, Netherlands | Madrid, Spain | Mumbai, India | Salisbury, UK | Santiago, Chile | Yokohama, Japan

