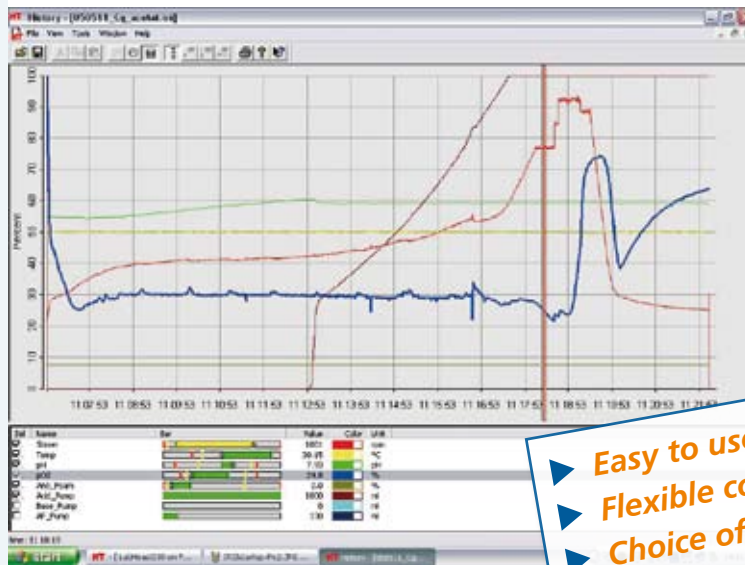
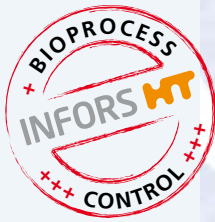


IRIS

A universal solution for DDC-Instrumentation



- ▶ Easy to use
- ▶ Flexible control options
- ▶ Choice of data types
- ▶ Communicative
- ▶ Graphical Power
- ▶ Remote Monitoring

Easy AND Comprehensive

▶ Easy to use

IRIS is fully Windows® compliant and so works just like your spread sheet or word processor applications.

▶ Flexible control options

Control can be semi-automatic using „follow file“, time-based or event-based using simple sequences to allow for many different possibilities. Automated pump control can be easily achieved in a variety of ways.

▶ Choice of data types

IRIS can deal with data provided by measurements online, by offline assays or even calculations based on incoming data.

▶ Communicative

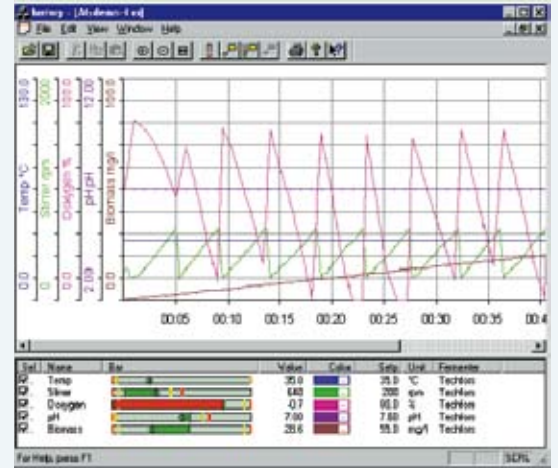
Links to balances and mass spectrometers are standard options plus the ability of some versions to send and receive data via OLE and OCP add greatly to the versatility of IRIS when used in combination with other software.

▶ Graphical power

IRIS provides you with a maximum of choices for adapting the online and off-line graph to your personal taste. Off-line data retrieved from samples can be added to the online-graph and final data finished off ready for publication.

▶ Remote monitoring

Don't let your fermenter tie you to the lab – Remote Fermentation Monitoring through the Internet is included in the base package.



Data Logging

- 1–8 Fermenter
- Online-Data from sensors
- Offline-analysis data
- Data from external peripherals
- Online display of all Data as text, line or bar graphs
- Two-stage asymmetrical alarms
- Storage & display of all alarm reports

Control

- „Supervisory Setpoint Remote Control“
- Time-based Profiling
- Event-based Profiling
- Calculated Parameters (eg. RQ)
- Control of fermenters over a network
- „Follow File“ > „Cloning“ of fermentations
- Data exchange between fermenters possible
- No data loss for the sake of smaller file sizes with data logging by time and by difference.

Analysis

- Graphical display
- Online Graph
- History Graph
- Bar Graph
- Comparison and Correlation Graphs
- Time Line Function
- Options for time, value and text message marking Reports
- Parameter data can be exported
- If required, only part of the data can be included
- If required, details of the fermenter protocol can be included
- If required, alarm reports can be included

Infors AG
Headoffice, Switzerland

Rittergasse 27
CH-4103 Bottmingen
T +41 (0)61 425 77 00
F +41 (0)61 425 77 01
headoffice@infors-ht.com

Infors UK Ltd

The Courtyard Business
Centre, Dovers Farm
Lonesome Lane, Reigate
Surrey, UK-RH2 7QT
T +44 (0)1737 22 31 00
F +44 (0)1737 24 72 13
infors.uk@infors-ht.com

Infors Sarl

6, rue Marcel Paul
FR-91742 Massy Cedex
T +33 (0)169 30 95 04
F +33 (0)169 30 95 05
infors.fr@infors-ht.com

Infors Italia S.r.l.

Via Barbara Melzi, 13
I-20025 Legnano (MI)
T +39 0331 59 47 67
F +39 0331 54 40 99
infors.it@infors-ht.com

Infors GmbH

Tannenweg 2
D-85254 Einsbach
T +49 (0)8135/83 33
F +49 (0)8135/83 20
infors.de@infors-ht.com

Infors Benelux BV

Logistiekweg 20-02
7007 CJ Doetinchem
P.O. Box 613
NL-7000 AP Doetinchem
T + 31(0)314-36 44 50
F + 31(0)314-37 80 76
infors.bnl@infors-ht.com

For more information please visit:
www.infors-ht.com