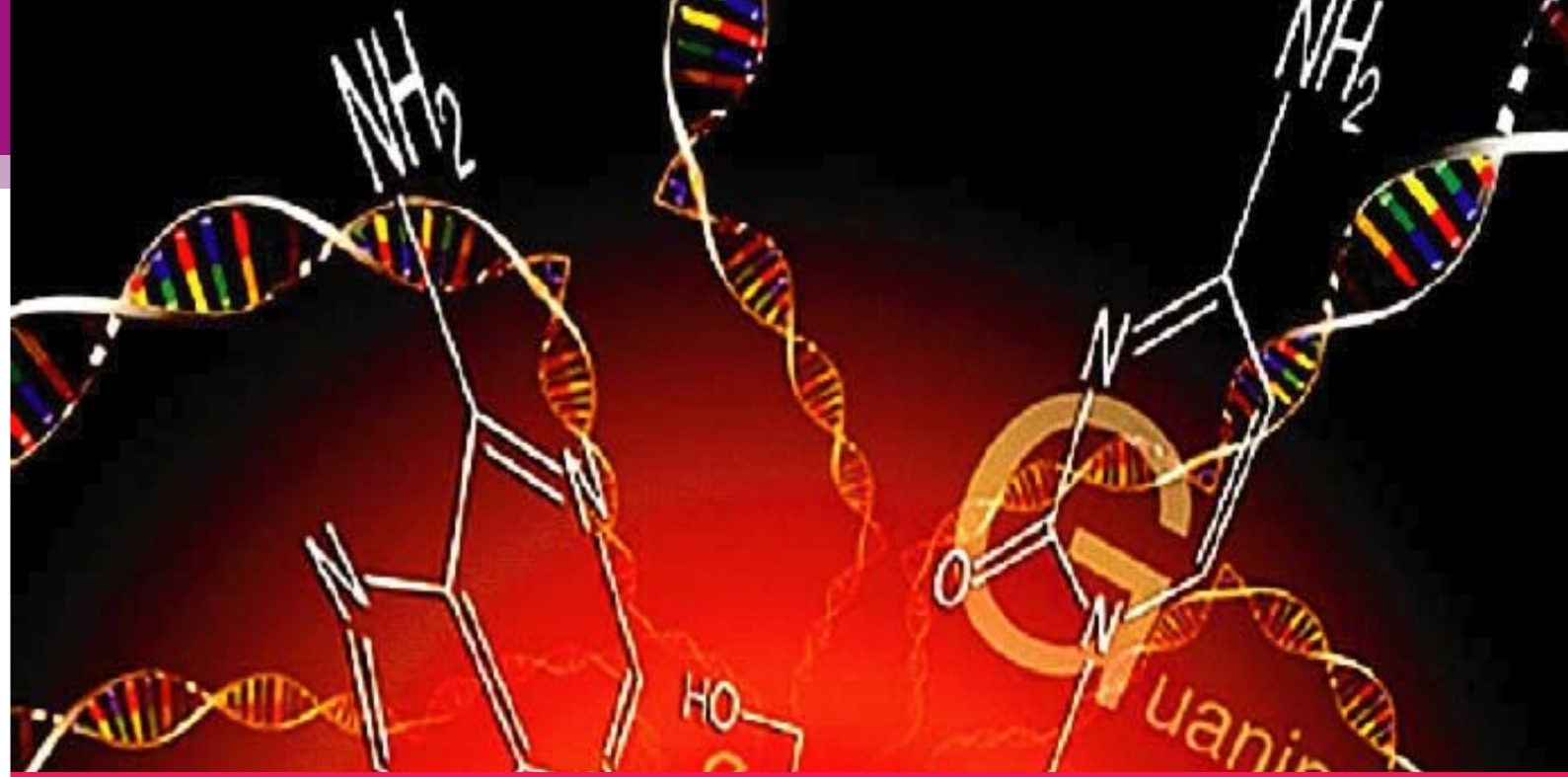
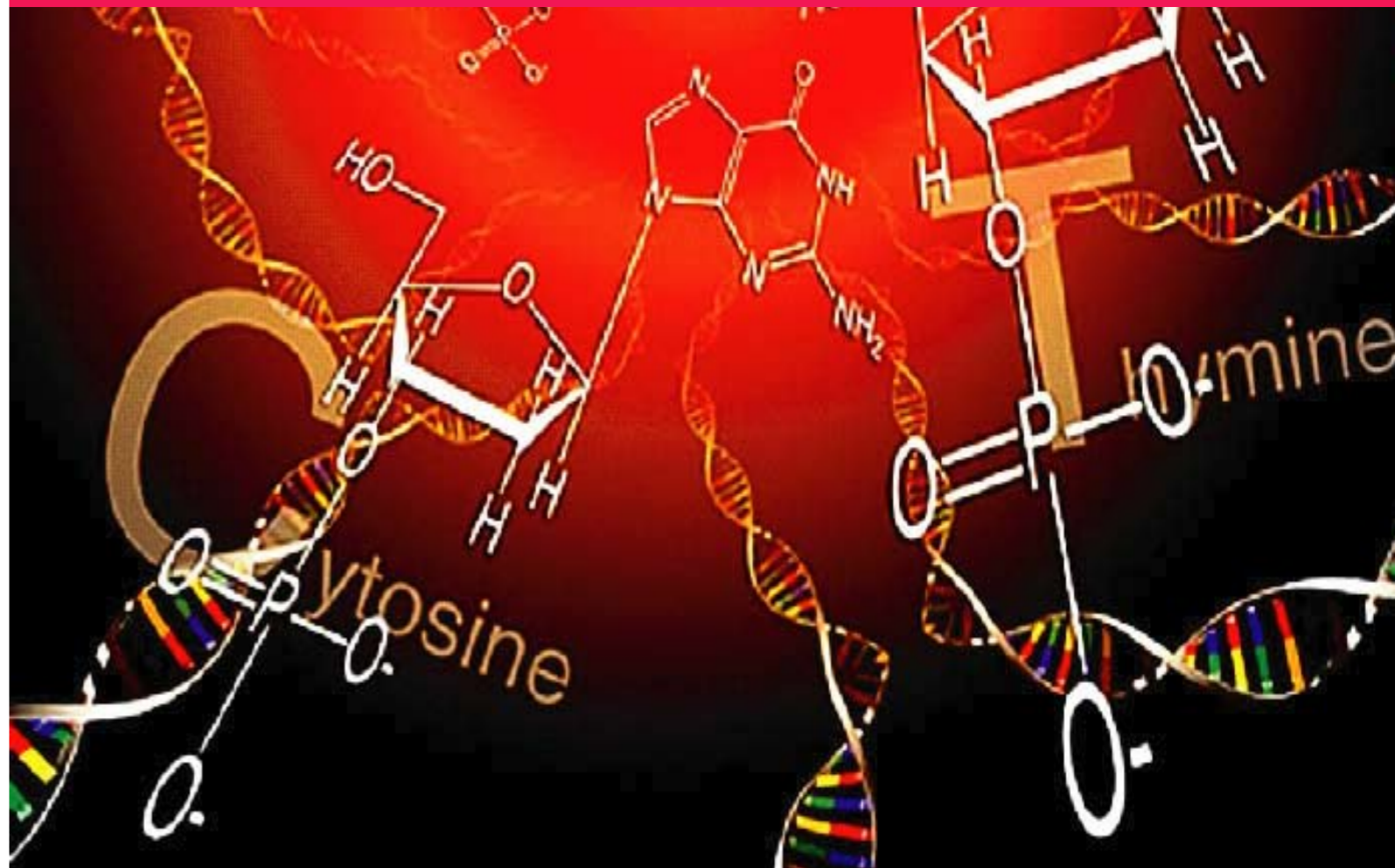


MEMO



# 7. DNA marker and Protein marker



**Description**

- Stable for more than 6 months at room temperature.
- Ready to use without any handlings.

**Fragments**

- 11 fragments of 100, 200, 300, 400, 500, 600, 700, 800, 900, 1000, 1500 bp

**General Usage**

- 100 bp Ladder DNA is resolved in ultra-pure described buffer (400 ng/10 µl).
- No DNase and RNase detected.
- Load 5~15 µl per lane.

**Electrophoresis**

- The 10 µl of ladder DNA was loaded, and then electrophoresed for 1 hr at 0.7 % agarose gel

**Storage Condition.**

- Store at RT

Product	Size	Cat. No.
100 bp Ladder Molecular Weight DNA Marker	1 ml	24012

Contents	Size
400 ng/10 µl in 10 mM Tris-HCl (pH 8.8), 1 mM EDTA, 50 mM NaCl, 1X Gel loading buffer, and DNA stabilizer	1 ml

**Description**

- Stable for more than 6 months at room temperature.
- Ready to use without any handlings.

**Fragments**

- 13 fragments of 250, 500, 750, 1000, 1500, 2000, 2500, 3000, 4000, 5000, 6000, 8000, 10000 bp

**General Usage**

- 1 kb Ladder DNA is resolved in ultra-pure described buffer (400 ng/10 µl).
- No DNase and RNase detected.
- Load 5~15 µl per lane.

**Electrophoresis**

- The 10 µl of ladder DNA was loaded, and then electrophoresed for 1 hr at 0.7 % agarose gel.

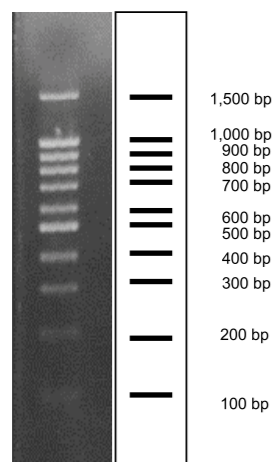
**Storage Condition.**

- Store at RT

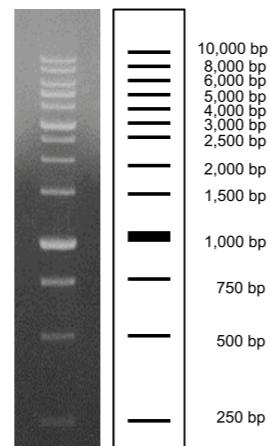
Product	Size	Cat. No.
1 kb Ladder Molecular Weight DNA Marker	1 ml	24022

Contents	Size
400 ng/10 µl in 10 mM Tris-HCl (pH 8.8), 1 mM EDTA, 50 mM NaCl, 1X Gel loading buffer, and DNA stabilizer	1 ml

<100bp Ladder Molecular Weight DNA Marker>



<1 kb Ladder Molecular Weight DNA Marker>



**Description**

PRO-STAIN™ (I) Prestained Protein Marker for Broad Range is a mixture of purified proteins covalently coupled to a blue and violet dye that resolves to 9 bands when electrophoresed. The protein concentrations are carefully balanced for even intensity. The covalent coupling of the dye to the proteins affects their electrophoretic behavior in SDS-PAGE gels relative to unstained proteins. The apparent molecular weight of the prestained proteins are given in the next the figure.

**Storage Condition.**

- Store at -20°C

PROTEIN	Apparent MW (Da)	COLOR
Myosin	198,000	Blue
β-Galactosidase	115,000	Blue
Bovine serum albumin	90,500	Violet
Glutamate dehydrogenase	61,500	Blue
Ovalbumin	46,200	Blue
Carbonic anhydrase	37,800	Violet
Myoglobin	26,000	Blue
Lysozyme	18,500	Blue
Aprotinin	9,000	Blue

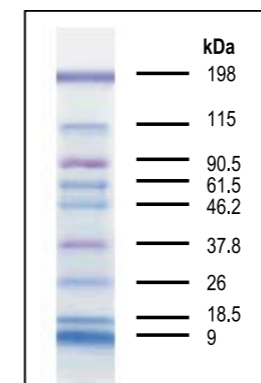


Product	Size	Cat. No.
---------	------	----------

Broad range		
PRO-STAIN™ (I) Prestained Protein Marker	250 ul	24051

Contents	Size
----------	------

PRO-STAIN™ (I) Prestained Protein Marker (9 band)	250 ul
---	--------



8~20% SDS-PAGE Blot

PROTEIN	Apparent MW (Da)	COLOR
β-Galactosidase	116,000	Blue
Bovine serum albumin	94,000	Violet
Ovalbumin	47,000	Blue
Carbonic anhydrase	37,000	Violet
Myoglobin	27,500	Blue
Lysozyme	19,300	Violet

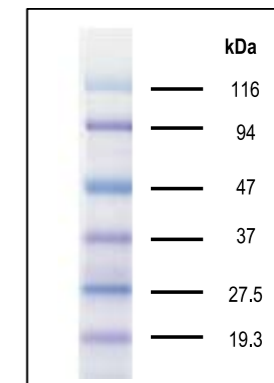


Product	Size	Cat. No.
---------	------	----------

Low range		
PRO-STAIN™ (II) Prestained Protein Marker	250 ul	24061

Contents	Size
----------	------

PRO-STAIN™ (II) Prestained Protein Marker(6 band)	250 ul
---	--------



8~20% SDS-PAGE Blot

# Broad-Way™ Prestained Protein Marker

## > Description

Broad-Way™ Prestained Protein Marker for broad range is a mixture of purified proteins covalently coupled to colored dyes that resolved to 8 bands between 19.5 and 213 kDa when electrophoresed. The protein concentration was carefully balanced for the convenient identification and a good resolution. This product was designed for real-time monitoring of protein separation during several-type electrophoresis and verifying western blot transfer efficiency. Broad-Way™ Prestained Protein Marker is supplied in gel loading buffer and is ready-to-use.

## > Characteristics

- The separation state of sample can be presumed during electrophoresis.
- Exceptional resolution allows the estimation of sample molecular weights.
- High-concentrated prestained proteins are contained, therefore very little amount is necessary.
- Very good lot-to-lot consistency.
- Ready-to-use. No boiling required before use.
- No chemical reduction necessary prior to gel loading.

## > Application

- Visualizing protein marker during electrophoresis
- Monitoring electrophoretic transfer of proteins onto membrane

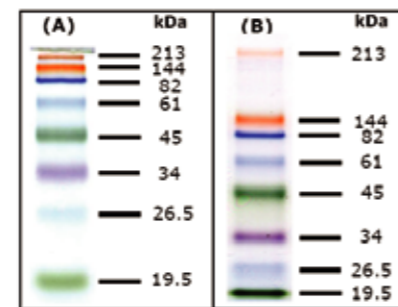
## > Storage Condition

Store at -20 °C, the guaranteed date is 1yr.  
It is recommended the product to be aliquot in several tubes.

## > Storage Buffer

- 2(w/v)% SDS
- 100 mM DTT
- 60 mM Tris-HCl (pH 6.8)
- 25(v/v)% Glycerol

## > Broad-Way™ Prestained Protein Marker



A 5 μl Broad-way™ Prestained Protein Marker was applied to 15% denaturing SDS-PAGE (A) and 4~12% gradient SDS-PAGE (B).

Broad-Way™ Prestained Protein Marker(for Broad Range, Four color)

PROTEIN	Apparent MW (kDa)	COLOR
Protein 1	213	Orange-minor
Protein 2	144	Orange-major
Bovine Serum Albumin	82	Blue
T4 Ligase	61	Blue
Ovalbumin	45	Green
Carbonic Anhydrase	34	Violet
Trypsin Inhibitor	26.5	Blue
Lysozyme	19.5	Green



Product	Size	Cat. No.
Broad-Way™ Prestained Protein Marker	500 μl	24082

Contents	Size
Broad-Way™ Prestained Protein Marker (8 band)	500 μl



MEMO

# 8 . Reverse Transcription