

schuett phoenix

Gas-safety burner

- professional design - stainless steel and glass surfaces
- digital display of actual remaining burn-time and status
- perfected safety
- up to 80 % gas savings
- UV-resistant, may be flame-sterilized
- integrated instrument tray

schuett phoenix -
the intelligent and flexible laboratory burner with digital technology.

One device for 3 modes of operation

IR-Sensor

The flame comes on for the exact time set by the user, accurate to the second (1 second - 99 minutes).

Foot-switch, mode 1

The flame only comes on when pressing the foot-switch and is thereby permanently under control.

Foot-switch, mode 2

The flame comes on when pressing the foot-switch and stops after pressing again or already after the preset time has elapsed.

Ease of operation - microprocessor controlled

schuett phoenix has been designed especially for use inside a microbiological safety cabinet, for flame-sterilizing of instruments and bottle necks. Both the operators hands are free. In chemical laboratories, it replaces the Bunsen burner for rapid heating of liquids.

Adjustable in the continuous mode for up to 99 min. Robust and highly reliable for laboratory- and mobile operation.

All controls are conveniently located on the front panel.

The instrument-tray is integrated.

The burner head may be easily removed for cleaning. A bracket underneath the device allows for tilting to the right or to the left (see photo 8).

Perfected safety

Ignition monitoring

The gas supply automatically cuts off as soon as the automatic ignition fails for more than 10 seconds to produce a flame.

Flame monitoring

Should the flame inadvertently be extinguished, a safety monitoring feature will provide for automatic re-ignition without interrupting your work.

Nonstop flame supervision

Should the flame extinguish due to spilled liquids and cannot be re-ignited, the gas supply automatically cuts off. Liquids entering the burner run out of the device through a special bottom drain.

Controlled burn-time

Digital and exact to the second (1 second - 99 minutes) adjustable - memory function

Sensor distance (0-80 mm)

Distance continuously and digitally adjustable

Digital display (large LED)

- Actual remaining burn-time (counting backwards)
- Actual mode of operation
- Fault report

Overheat protection

The schuett phoenix meets the DIN 30665, chapter 1 standards and has been registered under



schuett phoenix (photo 1)



schuett phoenix with CV 360-adaptor and cartridge (photo 2)



schuett phoenix with C 206-adaptor and cartridge (photo 3)

DIN-DVGW certificate NG-2211AR0750.

Gas-saving-features:

Adjustment of the burn-time exact to the second
Setting of the exact flame characteristics with precision controls for air and gas.

Flexible

For natural gas (central gas line) or propane/butane (cartridges).
Operation with gas cartridges CV 360 or C 206 (adapter/accessories) or by using the central gas supply.

Including power supply 230 V, 50 Hz or 115 V, 60 Hz or 12 V with adapter cable (accessory) to fit car/cigarette lighter.

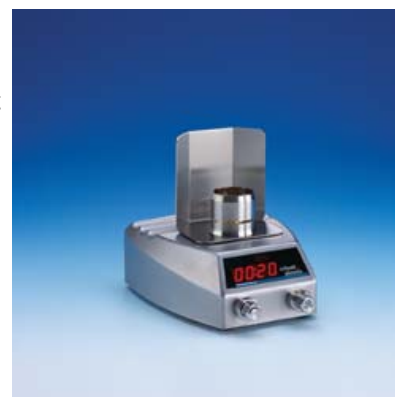


schuett phoenix with spatter guard
(photo 4)

Technical Data

Including power supply 230 V, 50 Hz or 115 V, 60 Hz or 12 V with adapter cable (accessory) to fit car/cigarette lighter.

Dimensions (wxhxd): 125x58x155 mm
Power: 230 V (optional 115 V), 50-60 Hz
Weight: approx. 1000 g



schuett phoenix with flame shield (photo 5)

Ordering Information

Type	Photo	Cat.-No.
schuett phoenix with stainless steel foot-switch and sensor, 230 V	1	3.351 102
schuett phoenix with stainless steel foot-switch and sensor, 115 V	1	3.351 112
Accessories		
Adapter cable for the connection to 12 V	9	3.351 202
Adapter for the connection of CV 360 butane cartridges	2	3.351 212
Adapter for the connection of C 206 butane cartridges incl. pressure reducing valve and gas safety hose (0,5 m)	3	3.351 222
Glass spatter guard	4	3.351 232
Flame shield	5	3.351 242
Gas safety hose 0,75 m for natural gas	10	3.351 262
Gas safety hose 0,5 m with threaded screw connections for propane/butane	-	3.351 272
Gas safety hose with threaded screw connections 2,0 m for propane/butane	-	3.351 282
Hot-Tray	6	3.351 292
Foot-switch made of stainless steel	-	3.351 532
Butane cartridges CV 360 (pack=6) content 52 g/cartridge GGVS 2/10 BS, UN 2037	-	3.351 300
Butane cartridges C 206 (pack=6) content 190 g/cartridge GGVS 2/11 B, UN 2037	-	3.351 310



schuett phoenix Hot-Tray (photo 6)



schuett phoenix with integrated instrument tray (photo 7)



schuett phoenix tilting to the right or to the left
(photo 8)



schuett phoenix adapter cable for the connection
to 12 V (photo 9)



schuett phoenix gas safety hose for natural gas
(photo 10)